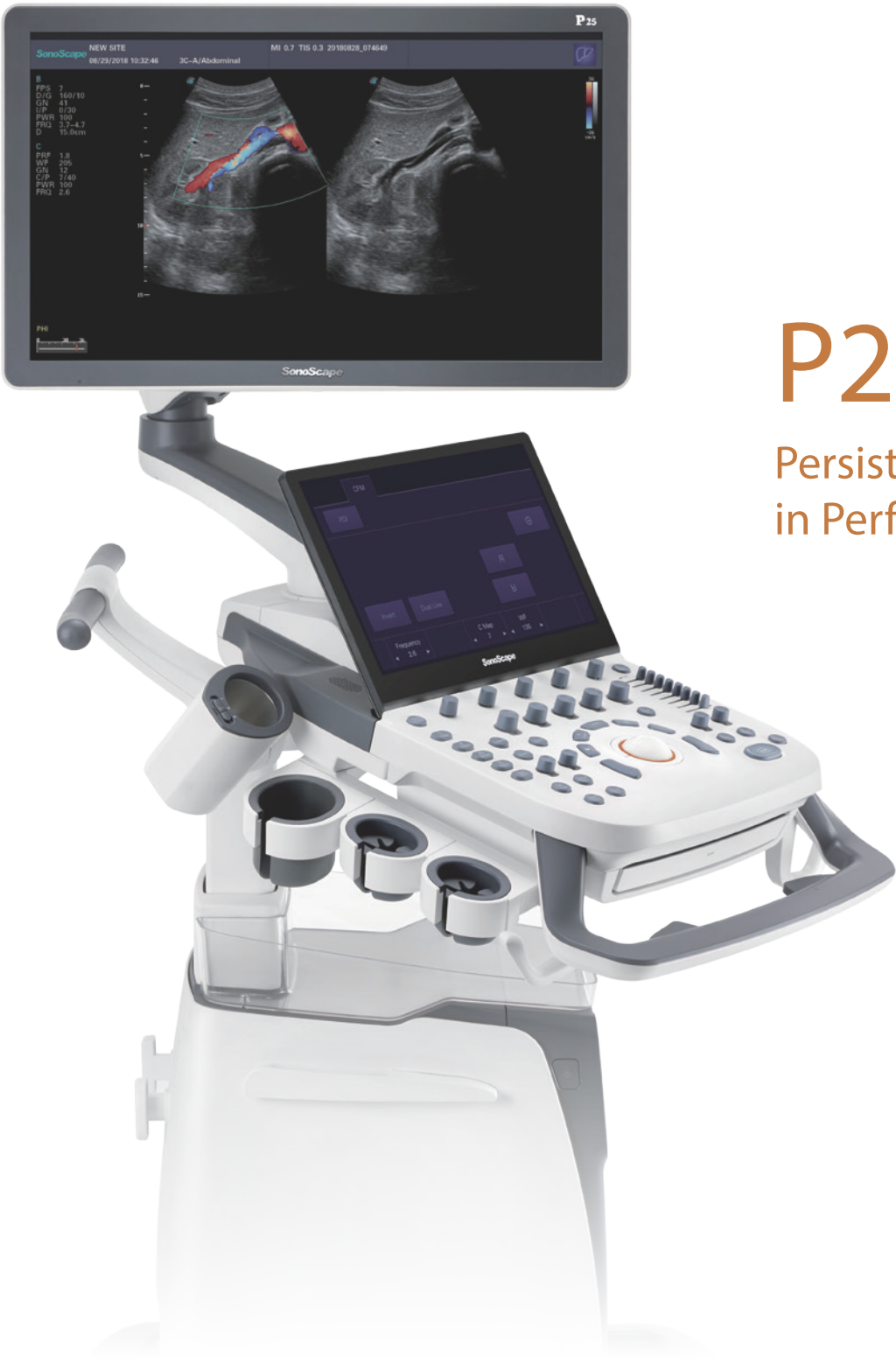


Company Milestone

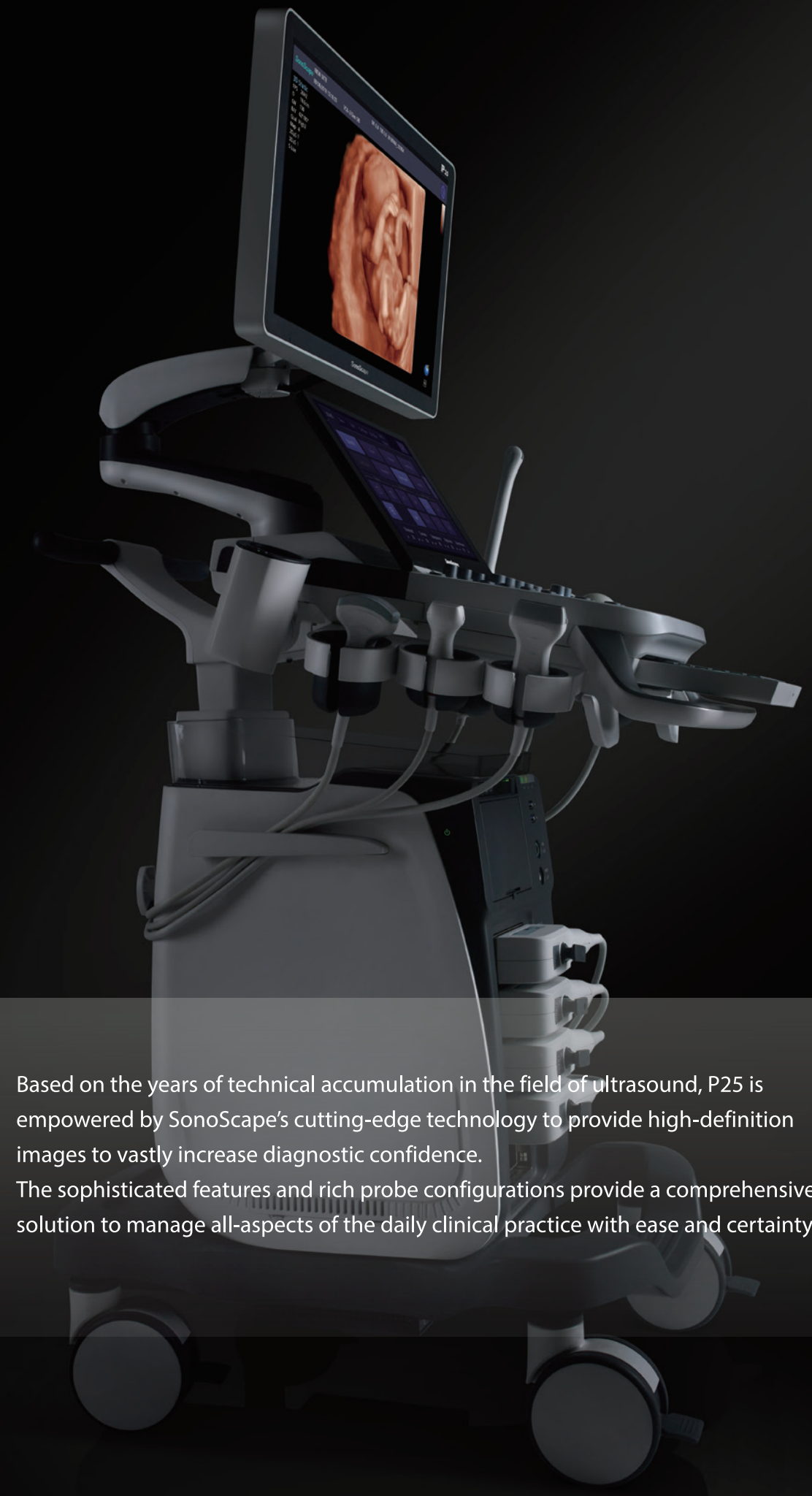
- 2002: Company Founded in Shenzhen, China
- 2008: Received “European Entrepreneurial Company 2008” award from FROST & SULLIVAN
- 2009: Received “Product Quality Leadership Award 2009” from FROST & SULLIVAN
- 2011: Received the Reddot 2011 Product Design Award for S20 in Essen, Germany
- 2013: Received “Ultrasound Market Growth Leadership Award, 2013” from FROST & SULLIVAN
- 2014: Received the iF product design award 2014 for S9 in Munich, Germany
- 2014: Received “Company of the Year in Ultrasound Market, 2014” from FROST & SULLIVAN
- 2016: Received “Product innovation in Electronic Endoscopy Market” from FROST & SULLIVAN
- 2017: Received the iF product design award 2017 for X5 in Munich, Germany
- 2017: Listed on Shenzhen Stock Exchange on April



ISO 13485
CE 0197



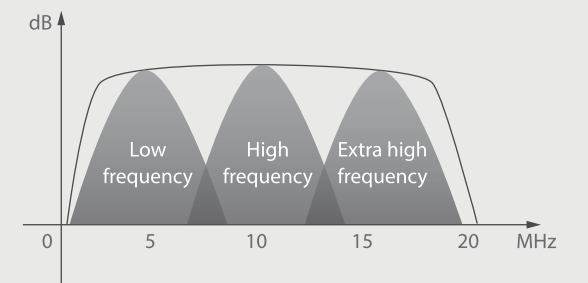
P25
Persistence
in Performance



Based on the years of technical accumulation in the field of ultrasound, P25 is empowered by SonoScape's cutting-edge technology to provide high-definition images to vastly increase diagnostic confidence. The sophisticated features and rich probe configurations provide a comprehensive solution to manage all-aspects of the daily clinical practice with ease and certainty.

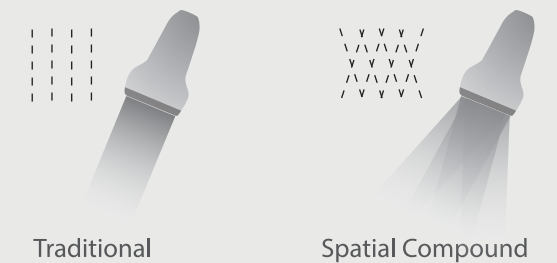
Super Wide-bandwidth Platform

Inheriting Wi-sono's ultra-wide system platform and with the advanced probe technology, high-resolution and deep penetration images are provided for precision medicine.



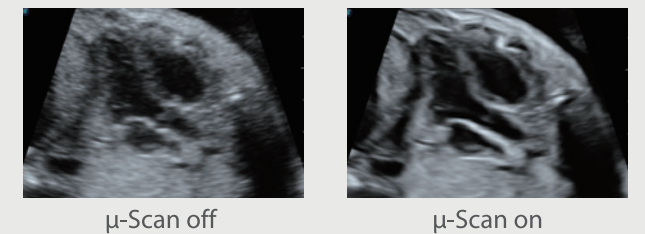
Spatial Compound Imaging

Spatial Compound Imaging utilizes several lines of sight for optimal contrast resolution, speckle reduction and border detection, with which P25 is ideal for superficial and abdominal imaging with better clarity and improved continuity of structures.



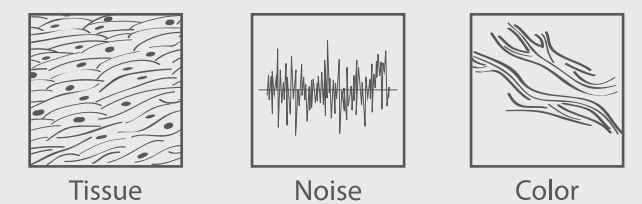
μ -Scan⁺

The new generation μ -Scan imaging technology gives you better image quality by reducing noise, improving signal strength and improving visualization.



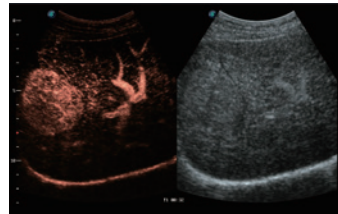
Dynamic Color

Dynamic color improves upon already existing color Doppler technologies for a clearer capture of color flow and detailed visualization of even tiny veins with lower velocities.



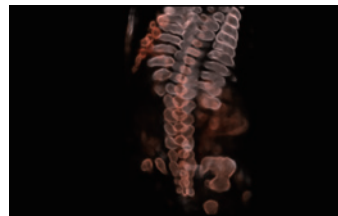
Contrast Imaging

The contrast agents provide a loud signal reflection, giving a more enhanced image of difficult-to-view blood flow. The Dynamic Acoustic Control feature of SonoScape Contrast Imaging provides image quality with a smaller agent dose.



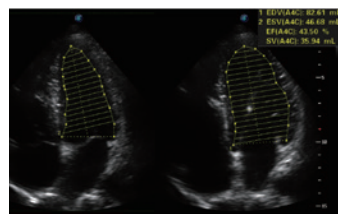
S-Live Silhouette

S-Live Silhouette is a unique transparent volume image for a more comprehensive internal and external view of the anatomy and provides more abundant diagnostic information for the clinic.



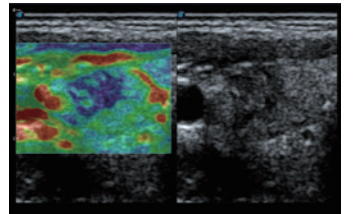
Auto EF

To recognize myocardial intima during the diastolic and systolic period and calculate the ejection fraction automatically.



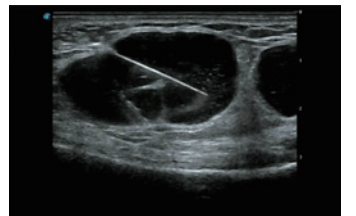
C-xlasto Imaging

C-xlasto Imaging enables comprehensive quantitative elastic analysis. It is supported by multiple probes to ensure good reproducibility and highly consistent quantitative elastic results.



Vis-Needle

Vis-Needle is realized by ultrasound beam steering and deflection. It improves the visualization of the needle shaft and needle tip in the tissue to minimize harm to the surrounding tissue, increasing the initial success rate and lowering the risk for needle puncture.



Specialty Probe

P25 covers a wide range of intraoperative clinical needs with more than 5 specialty transducers that deliver the versatility to expand clinical offerings.





Height-adjustable
control panel



Large capacity
built-in battery



Rotatable control panel



Five probe connectors



Multi-stage
temperature control
gel warmer



Cable management
holder

